

# click.easy<sup>®</sup> Mixing Guide

## Before you begin:

### You will need...

- ✓ click.easy<sup>®</sup> Self-Contained Reconstitution (mixing) Device

### Make sure to...

- ✓ Wash your hands with soap and water.
- ✓ Use a clean towel to dry your hands.
- ✓ Inspect click.easy for damage.
- ✓ Check the medication expiration date.

### Questions about click.easy<sup>®</sup>?

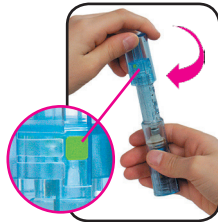
Contact Patient Support Services  
**800-582-7989**

## 1 Prepare your click.easy.



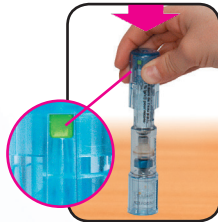
Stand the click.easy on a flat, non-slippery surface, with the Saizen vial on the bottom.

While holding the click.easy in a standing position, push down on the end cap using the flat of your hand to move the main housing over the vial container.



Turn the end cap clockwise until the green square can be seen in the rectangular opening.

**Note:** DO NOT overturn the end cap. If the end cap is turned too far, the device could jam during the next step.

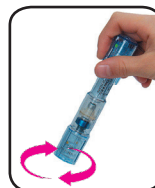


Slowly push down on the end cap over 10 seconds to transfer the diluent into the cartridge. Keep pushing until it will go no further and the green square appears at the upper end of the rectangular opening.

**Note:** If you are unable to transfer the diluent into the powder, do not apply force. After verifying that you have performed

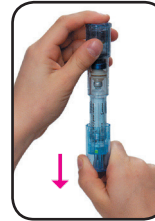
the previous steps correctly and the components are properly aligned, let the entire device sit in the refrigerator, and try again at a later time. A lower temperature may resolve this problem. If the problem does not resolve, call patient support services.

## 2 Mix your Saizen.



Swirl gently and wait for any foam to subside. Do not shake click.easy.

**Note:** You may need to let the solution stand for a few minutes until the Saizen powder dissolves.



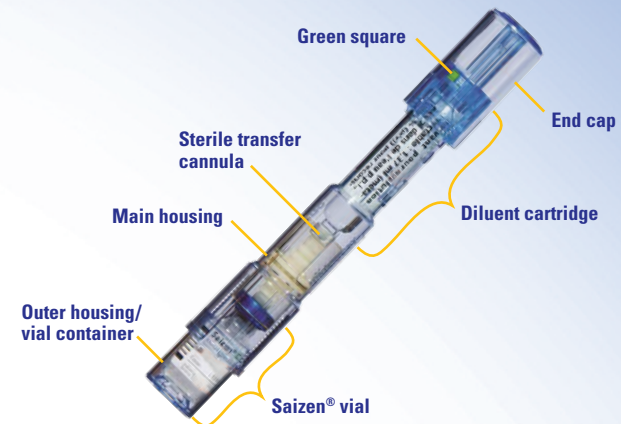
Turn your click.easy upside down so the Saizen vial is now on top.

Slowly pull down on the end cap until all the solution is transferred into the diluent cartridge.

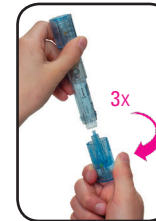


Look for air bubbles at the top of the cartridge. Remove air bubbles by slowly pushing the end cap back up until the air bubble is gone.

Once all of the solution is transferred and there are no air bubbles in the cartridge, stop moving the end cap.



## 3 Insert your Saizen cartridge into easypod.



Squeeze the two cartridge grips and unscrew the end cap until it completely detaches and falls into your hand.

**Note:** The cap must be unscrewed completely without pulling down, until only the end cap comes off. Do not pull end cap off.



Lift out the cartridge.

Peel off the outer label from the cartridge.

Write the mixing date in the white box on the cartridge.



Inspect your Saizen. Liquid should be clear and free of particles. If liquid is cloudy or contains particles, call patient support services.

Now you are ready to insert your cartridge into your injection device.

If you are not going to use your mixed cartridge right away, it should be stored in the refrigerator 36°-46°F/ 2°-8°C. Mixed cartridges should be used within 21 days after mixing.

### Important information...

Do not use Saizen<sup>®</sup> [somatropin (rDNA origin) for injection] if the liquid is cloudy immediately after mixing or after refrigeration. If liquid is cloudy, prepare another cartridge and contact patient support services at 1-800-582-7989.

Please consult your click.easy and easypod Instructions for Use for complete usage, troubleshooting, and maintenance information. Never immerse easypod in water or allow it to become wet.

Do not use click.easy without first being trained by your healthcare provider.

Please read the enclosed Saizen Full Prescribing Information for complete disclosure.

Unused click.easy devices should be stored at room temperature 59°-86°F/15°-30°C. Mixed Saizen cartridges should be stored in the refrigerator. Mixed Saizen cartridges should be used within 21 days after mixing.

©2014 EMD Serono, Inc. US-SAI-0713-0010(1)

**saizen<sup>®</sup>**  
[somatropin (rDNA origin) for injection]